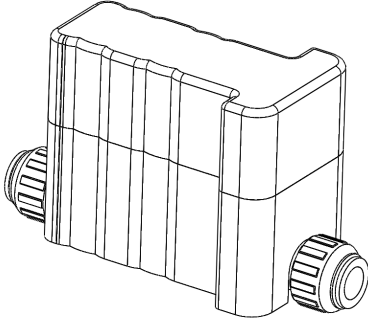


## Autofill

Automatic Central Heating Loop Refill Device



Pack Contains: 1x Autofill

## Device Information

Autofill

Model: AFA

Supply Voltage: 0-6V DC



Designed in the UK



Made in China

## Additional Equipment Needed

2x Flexible hoses (For connecting the filling loop to pipe tails)

2x 150mm x 15mm Copper pipe tails

2x Pipe Clamps

2x Screw and Wall Plug

Extension hoses (if required)

## Safety and Guidelines

The Autofill should only be installed by a competent person.



ALWAYS ISOLATE THE MAINS SUPPLY BEFORE INSTALLING OR WORKING ON ANY COMPONENTS THAT REQUIRE A 230V AC SUPPLY

The Autofill is intended for internal use only.

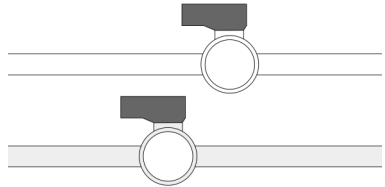
## Compatibility

The Autofill requires a BCM:Connect to operate.

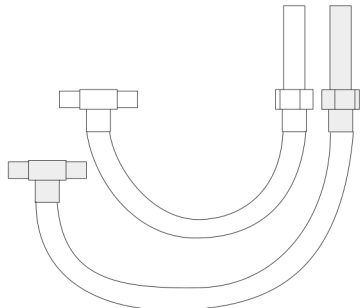
The Autofill replaces the existing filling loop.

## Installation

1. Turn off the valves and disconnect the pipe from the existing filling loop



2. Connect copper pipe tails to flexible hoses



Vericon Systems  
Unit 5, Churchill Industrial Estate,  
Churchill Road, Cheltenham,  
GL53 7EG

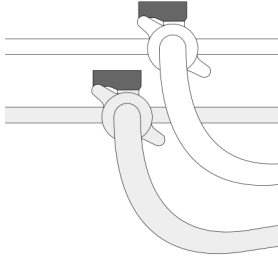
[www.vericonsystems.com](http://www.vericonsystems.com)

Support: [support@vericonsystems.com](mailto:support@vericonsystems.com)

## Installation

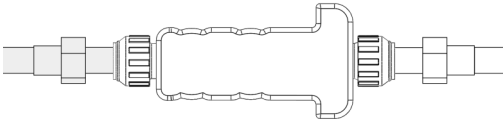
3. Connect the flexible hoses to the filling loop valve.

(Grey Pipe is water mains, White pipe is central Heating Loop)



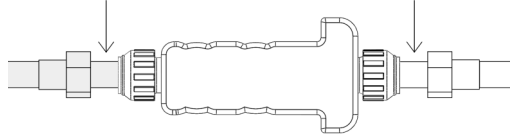
4. Push the copper tails into the Autofill. Ensure the Autofill is in the correct orientation.

(Flow direction is printed on the label)



## Installation

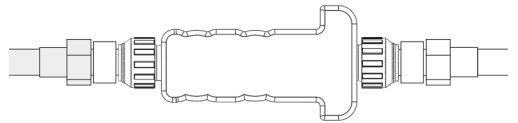
5. Locate a suitable position to mount the Autofill and mark the locations for a pipe clamp on each end of the Autofill.



6. Screw the pipe clamps into the wall using wall plugs where necessary.

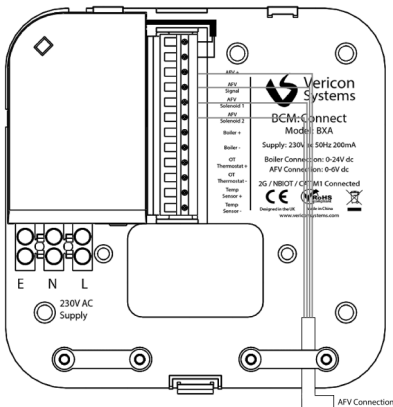


7. Clip the Autofill into the pipe clamps



## Installation

8. Wire the Autofill into the BCM:Connect Backplate

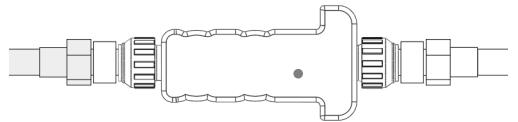


| BCM Terminal   | Autofill Wire Colour |
|----------------|----------------------|
| AFV +          | Red                  |
| AFV Signal     | White                |
| AFV Solenoid 1 | Blue                 |
| AFV Solenoid 2 | Yellow               |

## Installation

9. Complete the installation of BCM:Connect. When the BCM installation portal asks for connected devices, select 'Autofill' and input the Autofill serial number from the label.

10. Once the BCM:Connect installation is complete, the Red LED will be lit on the Autofill.



11. Turn the filling valves to the on position.

